

Follow Guchen on



Zhengzhou Guchen Industry Co., Ltd.

Add: No. 129, Huanghe Road, Zhengzhou (450008), China

Tel: 86-371-69152891/92/93 Fax: 86-371-69152894

Website: www.guchen.com Email: info@guchen.com



科技创造 环保空间 | Innovating in technology,
creating environment friendly space

www.guchen.com



科技创造 环保空间

Innovating in technology,
creating environment friendly space



GUCHEN BUS AIR CONDITIONING SYSTEM

全球最大的客车空调生产商，年产能逾70,000套，出口世界100多个国家和地区，自有国家级高性能空调实验室，确保产品性能领先，ISO/TS 16949 质量管控体系，品质国际接轨，注重环保及耐用性研究，彰显企业社会责任。

广泛应用MFC、LFT-D、CAN系统、轻量化、模块化。拥有“压缩机自我保护系统”、“空调湿度控制系统”等多项自由专利，引领行业发展，注重技术创新，在全电空调、独立式空调、背置式空调、车内综合环境控制技术等方面行业领先，产品系列全面、类型完善，完全满足用户个性化需求。

国内市场保有量逾20万台，海外市场保有量逾30000台，广泛分布在公交、客运、旅游等领域，全球380多家服务网点，全程售后服务保障，产品全寿命免费保养。

With experience in exporting to over 100 countries and an annual production exceeding 70,000 sets, Guchen is one of the biggest bus air conditioner manufacturer in the world. Our very own national level air-conditioning labs to ensure the high quality and reliability of all of our products. The ISO/TS 16949 Quality Control System is closely followed to ensure international standards are met as well as environmental friendly steps are taken to uphold our social responsibility as an leading enterprise in the industry.

All new technology such as MFC, LFT-D and CAN system is utilized in the production of air conditioning systems, giving products the characteristics of light weight and modularity. The company has acquired several patents for the compressor self-maintenance system and air conditioning humidity adjustment system, enabling us to be at the forefront of technical innovation in the industry. Currently the innovation emphasis are on all-electric air conditioning, individually controlled air conditioning, rear mounted air conditioning, and in-vehicle environment control technology. A wide variety of product types and series can be chosen from our inventory, and customization can be arranged on the customer's request.

The number of product on hand in the domestic market is over 200,000 sets, and over 30,000 sets in the oversea market, which are used in public transit, passenger transport and tourism. More than 380 service stations all over the world provide full range after sale services.



简介及文化篇 | INTRODUCTION AND CULTURE

BRIEF INTRODUCTION

专业从事客车空调器总成、冷藏车制冷机组及其相关零部件研发、生产、销售与服务的高新技术企业。具备年产70,000套客车空调、3,500套冷藏车制冷机组及3,000套卡车空调的能力，年销售收入近12亿元。

优良的产品源自先进的设计与制造。公司紧紧依托专业的空调性能实验中心，致力于空调产品的节能环保与耐用性研究，同时采用航空环控工艺及国际品牌零部件，并依照ISO/TS 16949 标准体系进行运行控制，严格确保产品的性能及品质。

卓越的产品性能业绩提升的基础。公司系列产品深得国内外客户好评，并规模出口到墨西哥、哥伦比亚、俄罗斯、印度、沙特阿拉伯、香港、新加坡、古巴等五十多个国家和地区。

公司秉持“崇德、协同、鼎新”的企业文化，坚持“以客户为中心、以员工为中心”的经营管理理念，不断追求“产品领先、服务领先、管理领先、行业领先”；以环境专家的愿景努力实现“为顾客，创造满意、信任、价值的舒适环境；为员工，建造合作、安全、环保的工作环境；为企业，打造健康、持久、创新的发展环境；为社会，营造崇德、协同、鼎新的文化环境”。愿我们携手从点滴做起，为社会增添更多清爽，为企业创造更大价值。

As a high tech enterprise specialized in R&D, production, sale and service of bus air conditioning and related parts, we have an annual production capacity of 70,000 bus air conditioners, 3,500 truck refrigeration units and 3,000 truck air conditioners, an annual turnover of nearly 1200 million RMB.

We believe that excellent products stem from advanced design and manufacturing. The reliability of all of our products are ensured by closely following ISO/TS 16949 standard system, as well as utilizing aviation environmental control technology and world known brand spare parts.

Superior quality is the key to a successful company. Our products have received high praise from clients home and abroad such as Yutong Coach, and countries such as Mexico, Colombia, Russia, India, Saudi Arabia, Hong Kong, Singapore and Cuba.

“Virtue, synergy, and innovation”, those are the values that the company adheres to. We have never stopped our pursuit of being a leader in the service, product and manage within the industry. In consultation with our specialist, the company is able to create a comfortable and satisfactory working environment for both workers to be able to innovate, contribute and stay healthy as well as for the customers to be satisfied and cooperate in an ideal environment. May your cooperation with us have a prosperous development, and let us contribute to the development of a better society and company.





技术篇 | TECHNOLOGY

坚持自主研发，确保技术储备，融合先进技术工艺，走自主独立的技术发展道路。

先进高效的设计手段 / 运用AUTOCAD,CATIA等设计软件进行产品的全段设计开发。依托自有大型空调性能实验室进行产品验证与优化，设计水平行业领先。

广泛深入的技术合作 / 与中科院等技术权威机构进行长期合作与研究。确保产品的高技术含量，巩固行业技术龙头地位。

科学的理念引导 / 注重法律法规，适应行业的发展趋势，将安全、节能、耐用与人性化作为产品的开发原则和设计理念。

成熟完备的产品系列 / 以市场为导向，全面满足客户使用需求，具备完整的客车空调产品系列。保障了产品的适销性、实用性。

权威水平的技术队伍 / 公司拥有多位客车空调行业资深专家，骨干设计人员均拥有10年以上的开发设计经验。

Company sticks to independent research and development, ensures best technological storage, and integrates with advanced technical craftwork.

Advanced and highly effective designing tools: By applying such designing software like AUTOCAD and CATIA, We carries on design and development of all its products. It relies on its large-sized air-conditioning performance experiment lab to validate and optimize products, with leading design level in the industry.

Extensive and profound technological cooperation: We carries on long term cooperation and research with such technologically authoritative institutions as Chinese academy of science so as to ensure highly technological contents in its products and strengthen its leading position in the industry.

Leading by scientific outlook: Respect law and regulations, suit the trend of industry development, and take safety, energy saving, durability and humanization as its principles for products' development and design.

Mature and complete products series: Market-oriented, provide complete series of coach air-conditioning products to comprehensively satisfy customers' demand for use, Guarantee its products' salability and practicability.

Technical team with authoritative level: The company owns senior experts in coach air-conditioning industry. Its backbone designers have on average over 10 years' experience in development and design.

生产篇 | PRODUCTION

公司遵从“生产铸就品质，工艺实现超越”的制造理念，对每件产品追求精益求精。

领先的生产规模：公司拥有近50000平方米生产面积，4条自动总成生产线，4条芯体生产线，年产能70000套。

一流的生产管理：公司实行精益化生产，执行6S现场管理，无尘环境接近电子产品要求。

先进的成产工艺：采用航空环控系统制造工艺，确保产品精细度与一致性，同等配置性能优于行业水平。

We abide by the ideas of forging quality and transcendence of craftsmanship from production and the the pursuit of product quality.

Leading in production sale: We possess a production area of 50,000 square meters, 4 automatic assembly production lines, 4 coil production lines, an annual production capacity of 70,000 sets and a leader in the industry.

Modernized production management: We implemented exquisite production and 6S on-the-spot management

Advanced production workmanship: Adopted aviation environmental control system manufacturing workmanship and guarantee product fineness and consistency. Identical configuration exceeds competitors.



质量篇 | QUALITY

公司坚持“耐用是金”的品质理念，
运用多种科学合理的保障手段，确保产品质量可信。

完善的质量体系：充分领会和运用ISO9001和TS16949质量管理体系。将质量控制贯穿于研发、生产、服务的基本环节。

严格的采购标准：实行严格的供应商管理和评价制度。产品各部件均采用高于总成的质量标准，确保产品质量。

科学的质保手段：坚持预防为主，实行过程控制。从设计源头严控产品的质量隐患，确保各工序的质量完好率，将质量严控贯穿整个生产过程。

完善的检测制度：产品定型前均报国家制冷设备检测中心进行检测备案，确保产品性能真实可靠。

We adheres to quality ideas of durability the gold, and applies multifold guarantee means of science and reasonableness to ensure reliable quality.

Perfect quality system: Fully comprehend and apply ISO9001 and TS16949 quality management system, and implement quality control through basic links of research and development, production and service.

Strict procurement standard: Conduct strict supplier management and appraisal system. For all parts of products, apply the quality standard higher than product assembly's standard to ensure products' quality.

Means of scientific quality warranty: Adhere to take prevention as the key and carry out process control. Strictly control products' quality from initial designing to ensure perfect quality in various working procedure. Implement quality control through the entire production process.

Perfect inspection and test system: Before finalize the design, carry on inspection and filing in the State Refrigerating Equipment Inspection and Test Center and ensure products' function authentic and reliable.



服务篇 | SERVICE

公司坚持“专业，诚信，价值”的服务理念，
为用户提供快捷、优质的售后服务。

完善的服务网络：380余家空调服务站，专职国内外服务人员，确保用户随时随地得到优质、专业的售后服务。

顺畅的配件渠道：完善的省级配件储备中心及用户专属配件库，确保产品全寿命的配件及时、充足供应。

周到的专职服务：实行客户经理负责制。对客户产品实行专职人员维护，确保用户的最佳服务体验。

全称的服务保障：面向全部用户提供终身维护服务、产品保养建议及技术支持，真正实现使用无忧。

良好的服务价值：公司注重于客户的长远合作，重视用户对服务的差异化需求，保障产品的最大使用价值。

We adheres to service ideas of specialization, integrity and value and provides fast and quality after-sales service for users.

Perfect service network: Over 380 bus air-conditioning service and outlets and full time service giving personnel will enable its users to have access to quality and professional after-sale service.

Smooth spare parts supply channel: Perfect provincial-level spare parts storage center and users special components warehouse will ensure timely supply of all products' spare parts.

Thoughtful full-time service: Conduct the client manager responsible system and let full-time professionals to maintain and repair big clients' products and ensure users' best service experience.

Complete service warranty: Provide all users with life-time maintenance service, product maintenance suggestions and technical support. Truly realize worryless use of products.

Favorable service value: We puts emphasis on long time cooperation with customers, pay attention to users' differentiated demand for service, and guarantee users' maximum using value.

应用篇 | PRODUCTS' APPLICATION

产品市场保有量200,000套，产品类型完善，具有顶置式、背置式、内置式、双动力、全电式、独立式等多种形式，可完整覆盖客运、公交、旅游、团体、特种车等市场。

Guchen products maintain a holding market share of more than 200,000 sets in domestic market. Diverse types including rooftop mounted, split system, dual power driven, electrical, sub-engine systems, can completely cover all markets such as passengers transit, public transit, tourism, group, special vehicles.



海外篇 | OVERSEAS MARKET

海外保有量逾30,000套，产品批量服务与沙特阿拉伯、科威特、埃及等高温干燥地区；古巴、菲律宾、新加坡等高温潮湿地区；俄罗斯、乌克兰等高寒地区。

Guchen products maintain a holding share of more than 30,000 sets in overseas market.

Batches of its products have been exported to scorching and dry area such as Saudi Arabia, Kuwait and Egypt, the scorching and damp area such as Cuba, Philippines and Singapore, and the Alpine region such as Russia and Ukraine.

BRIEF PRODUCT LIST

Model	Compressor	Cooling Capacity (KW)	Dimension (mm)	Product Photo	Application	Vehicle Photo
Airpro 2000	DC Electric compressor	1700Kcal/h 2.0Kw 6800BTU	C: 865*660*210 E: 425*325*155			
Ecooler2600	DC Electric compressor	2300Kcal/h 2.6Kw 8870BTU	C: 681*465*192 E: 540*362*185		All kinds of trucks, construction machines	
Ecooler2400	DC Electric compressor	2000Kcal/h 2.4Kw 8200BTU	700*582*263			
Ecooler3200	DC Electric compressor	2800Kcal/h 3.2Kw 11000BTU	885*710*290		Tractor or Truck Cabin	
Ecooler3800A	AC Electric compressor	3439Kcal/h 4Kw 13600BTU	1788*632*256		RV	
Airpro 4000	DC Electric compressor	3000Kcal/h 3.5Kw 11900BTU	1050*800*225		Van or RV	
GC-03	5H09	3000Kcal/h 3.5Kw 12000BTU	701*695*176		Tractor or Truck cabin	
GC-04	5H14	4500Kcal/h 5.2Kw 18000BTU	743*735*190		Truck Cabin Ambulance, Van or heavy-duty cabin	
GC-10E	7H15/TM21	8500Kcal/h 10.0Kw 34000BTU	1010*970*174		5-6m Minibus or Van	
GC-8C	TM16 / TM21	10000Kcal/h 12.0Kw 40000BTU	1661*1245*214		5-6.5m Minibus or Van	
BD-01	Valeo TM31	18000Kcal/h 21.0Kw 71000BTU	3038*1820*223		4.5-5.5m Minibus or Van	
BD-03	Bock FK40 470K	22000Kcal/h 25.6Kw 87000BTU	3335*1820*187		5.5-6.5m Minibus or Van	
BD-04	Bock FK40 560K	24000Kcal/h 27.9Kw 95000BTU	3335*1820*187		City Bus 7-7.8m	

Model	Compressor	Cooling Capacity (KW)	Dimension (mm)	Product Photo	Application	Vehicle Photo
BD-05	Bock FK40 560K	28000Kcal/h 32.6Kw 111000BTU	3804*1902*205		City Bus 9-10m Coach 10-11.5m	
BD-06	Bock FK40 655K	32000Kcal/h 37.2Kw 127000BTU	4435*1902*210		City Bus 10-12m Coach 11-13m	
SD-03	Bock FK40 470K	22000Kcal/h 25.6Kw 87000BTU	2361*1920*300		City Bus 7.7-8.5m Coach 8-9m	
SD-04	Bock FK40 560K	24000Kcal/h 27.9Kw 95000BTU	2361*1920*300		City Bus 8-9.3m Coach 8-9.5m	
SD-05	Bock FK40 560K	28000Kcal/h 32.6Kw 111000BTU	2610*1920*307		City Bus 9-10m Coach 10-11.5m	
SD-06	Bock FK40 655K	32000Kcal/h 37.2Kw 127000BTU	2860*1920*292		City Bus 10-12m Coach 11-13m	
PD-03	Valeo TM31	18000Kcal/h 21.0Kw 71000BTU	2481*1820*220		City Bus 7-7.8m Coach 7-8m	
PD-04	Bock FK40 470K	22000Kcal/h 25.6Kw 87000BTU	2640*1820*226		City Bus 7.7-8.5m Coach 8-9m	
PD-05	Bock FK40 560K	24000Kcal/h 27.9Kw 95000BTU	2640*1820*226		City Bus 8-9.3m Coach 8-9.5m	
PD-06	Bock FK40 560K	28000Kcal/h 32.6Kw 111000BTU	3010*1902*225		City Bus 9-10m Coach 10-11.5m	
PD-07	Bock FK40 655K	32000Kcal/h 37.2Kw 127000BTU	3285*1902*225		City Bus 10-12m Coach 11-13m	
ED-03	Electric compressor	14000Kcal/h 16.0Kw 55000BTU	2479*1630*240		Coach 6.0-7.0m	
ES-04	Electric compressor	18000Kcal/h 21.0Kw 71000BTU	2500*1920*265		Coach 7.0-8.5m	
ES-05	Electric compressor	22000Kcal/h 26.0Kw 88000BTU	2750*1920*270		Coach 8.5-9.0m	
ES-06	Electric compressor	27000Kcal/h 32.0Kw 110000BTU	3000*1920*270		Coach 10.0-12.0m	

PRODUCT

B Series



Feature:

- Manual and automatic control mode, simple operation and easy using.
- LFT shell structure with good heating insulation and anti-aging properties.
- Internal screw thread copper tube and hydrophilic aluminum fins making cooling performance optimized.
- Diversity of configurations to meet different needs and superiority in cost-effectiveness

Series	BD-01	BD-03	BD-04	BD-05	BD-06	BD-09
Applicable	5-6M	7-8M	8-9.5M	9-11.5M	10-13M	18M
Cooling capacity (kcal/h)	18000	22000	24000	28000	32000	54000
Evaporator air flow (m³/h)	4000	4000	4000	6000	8000	12000
Number of Evaporator blowers	4	4	4	6	8	12
Fresh air flow (m³/h)	1000	1000	1000	1000	1750	3500
Size(mm)	3038*1820*223	3335*1820*187	3335*1820*187	3804*1902*205	4435*1902*210	3804*1902*210 (2 sets)
Max ambient temperature(°C)	50	50	50	50	50	50
Compressor	Valeo TM31	Bock 470K	Bock 560K	Bock 560K	Bock 655K	Bock 980K
Compressor displacement(cc)	313	466	554	554	650	980

Note:

- Compressor as optional like VALEO, BITZER, or BOCK
- The fan&blower as option like brush or brushless, local or Spal etc
- The coil of condenser as option like micro-channel heat exchange, copper tube and aluminum tube.
- As product improvement or update ,Guchen reserves the right to change at anytime without prior notice

PRODUCT

S Series



Feature:

- Compact package design, better matching ability to vehicles and more convenient for installation.
- Optimized condenser coil layout angle with stronger heating transfer ability and less refrigerant charging.
- All parts and materials are from well-known brands of suppliers from home and abroad with better stability and quality assurance.

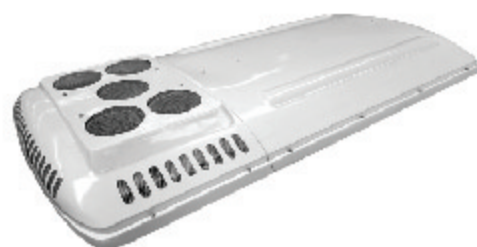
Series	SD-03	SD-04	SD-05	SD-06	SD-09
Applicable	7-9M	8-9.5M	9-11.5M	10-13M	18M
Cooling capacity (kcal/h)	22000	24000	28000	32000	54000
Evaporator air flow (m³/h)	4000	4000	6000	8000	12000
Number of Evaporator blowers	4	4	6	8	12
Fresh air flow (m³/h)	1000	1000	1500	1750	3500
Size(mm)	2361*1920*300	2361*1920*300	2610*1920*307	2860*1920*292	2610*1920*307 (2 sets)
Max ambient temperature(°C)	50	50	50	50	50
Compressor	Bock 470K	Bock 560K	Bock 560K	Bock 655K	Bock 980K
Compressor displacement(cc)	466	554	554	650	980

Note:

- Compressor as optional like VALEO, BITZER, or BOCK
- The fan&blower as option like brush or brushless, local or Spal etc
- As product improvement or update ,Guchen reserves the right to change at anytime without prior notice

PRODUCT

P Series



Feature:

- Efficient micro-channel heat exchange, smaller volume and higher performance.
- Enhanced corrosion resistance of components to meet the long-term operation under humidity.
- The shock absorption design, suitable for bumpy roads.
- The overall lightweight design, low cost and less fuel consumption.

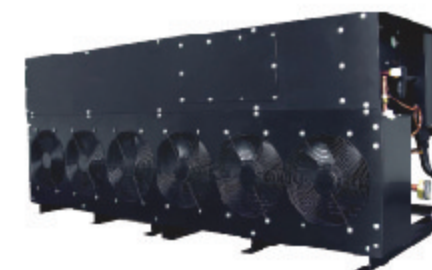
Series	PD-03	PD-04	PD-05	PD-06	PD-07
Applicable	7-7.5M	7.5-8M	8-8.7M	8.7-10M	10-12M
Cooling capacity (kcal/h)	18000	22000	24000	28000	32000
Evaporator air flow (m³/h)	4000	4000	4000	6000	8000
Number of Evaporator blowers	4	4	4	6	8
Fresh air flow (m³/h)	1000	1000	1000	1500	1750
Size(mm)	2481*1820*220	2460*1820*226	2460*1820*226	3010*1902*225	3285*1902*225
Max ambient temperature(°C)	50	50	50	50	50
Compressor	Valeo TM31	Bock 470K	Bock 560K	Bock 560K	Bock 655K
Compressor displacement(cc)	313	466	554	554	650

Note:

- Compressor as optional like VALEO, BITZER, or BOCK
- The fan&blower as option like brush or brushless, local or Spal etc
- As product improvement or update, Guchen reserves the right to change at anytime without prior notice

PRODUCT

G Series



Feature:

- Optimized air duct layout, air out more evenly.
- Compact package design, easier for installation and less weight.
- According to the needs, equipped with roof mounted unit, partition temperature control can be realized, and strong adaptable for vehicle models.

Note:

- Compressor as optional like VALEO, BITZER, or BOCK.
- The fan&blower as option like brush or brushless, local or Spal etc.

Model	Compressor	Cooling Capacity	Heating Capacity	Evaporator Air Flow	Fresh Air Flow	Dimension (mm)	Max Ambient Temperature(°C)	Application
GD-05	Bock 655K	33KW	---	8000(m³/h)	---	2028*700*700	50	9-10m Double Deck Bus
GD-08	Bock 775K	55KW	48KW	10000(m³/h)	1750	2461*772*852	50	12-14m Double Deck Bus

PRODUCT

D Series



Feature:

- Independent compressor drive, stable system pressure, not interfered by the main motor and with both quality of cooling and driving.
- Use engine with high quality to ensure low noise, less fuel consumption and match large Displacement compressor with strong cooling output.
- Perfect protection function for voltage, coil temperature, system pressure, temperature of Motor and oil pressure.
- Humanization rear start design and easy for operation.

Note:

- Compressor as optional like VALEO, BITZER, or BOCK
- The fan&blower as option like brush or brushless, local or Spal etc

Model	Engine Brand	AC Voltage (V)	Engine displacement (L)	Engine Power (Kw)	Cooling Range (kcal/h)	Vehicle matched(m)
DD	Yanmar or Isuzu	DC24	2.19	25.2	32700-41300	12-14 shuttle bus

- As product improvement or update, Guchen reserves the right to change at anytime without prior notice

PRODUCT

E Series

All-Electric Bus HVAC Solutions

Lighter, shorter, lower noise, lower power consumption
More comfortable traveling experience



Feature:

- Use scroll compressor, intellectual heat load reaction and automatic cooling capacity adjusting
- Modular, roof mounted, light weight, fit for vehicle of different width
- Adopt CAN control technology, multi-operation mode, concisely lining and more reliable control
- Adopt R407C environment-friendly refrigerant, volume charge saving more than 20%.

Series	Max. Power Consumption (KW)	Cooling Capacity	Heating Capacity	Evaporator Air Flow	Number of Evaporator blowers	Dimension (mm)	Voltage (V)	Application
ED-03	5	16	14	4000	4	2749*1630*240	DC400-750V	6.0-7.0M Bus
ES-04	6.5	21	20	4000	4	2500*1920*265	DC400-750V	7.0-8.5M Bus
ES-05	8	26	24	6000	6	2750*1920*270	DC400-750V	8.5-9.0M Bus
ES-06	10	32	30	6000	6	3000*1920*270	DC400-750V	10.0-12.0M Bus



● As product improvement or update, Guchen reserves the right to change at anytime without prior notice



Energy Saving, Comfort

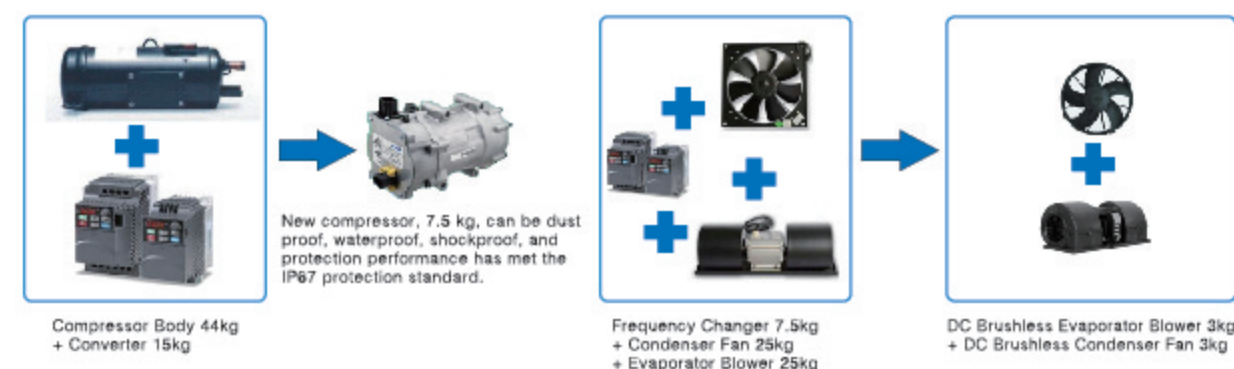
Guchen has developed intelligent inverter control model PI with independent intellectual property through extensive

bench testing, theoretical calculations and actual vehicle validation, which has become the core competitiveness of

Guchen. The techs in Guchen's Pure electric bus air conditioners are far more better than domestic rivals in this field,

for its all DC products can save more than 15% energy which has been verified in vehicle test.

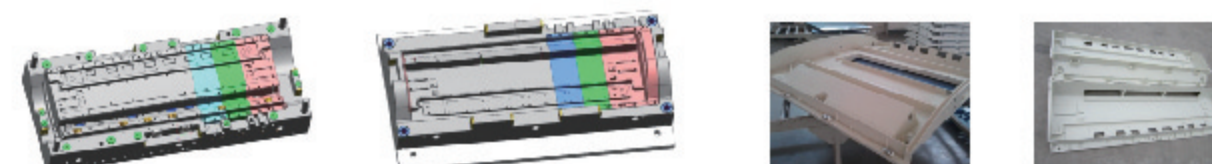
Light Weight



Environmental Protection

Housing and cover are made of SMC and LFT-D material, meanwhile made by mould pressing technology, ensure that the emissions of harmful substances are below the national standard. It is unique in the industry.

All components are passed the rigorous environmental testing.



MINIBUS and VAN

GC Series

Guchen is offering a specialized range of air conditioners for minibus and van, either ambulance or vans from Benz Sprinter, Iveco Daily, VW, Ford and Renault, of any dimensions, even some special purpose vehicles.

Clever solutions and high quality products are satisfying, since twenties years, famous manufacturers or body-builders of such vehicles in China and the major international markets, which meet with Guchen the ideal partner. Besides a lot of versatile components to be combined, that are different either for the installation position or for the air distribution, Guchen is the right supplier for a "Customized Product" for air conditioning systems for minibus and van.



Model	Compressor	Cooling Capacity (KW)	Evaporator Air Flow (m³/h)	Max Ambient temperature (°C)	Voltage (v)	Dimension (mm)	Application
GC-03	5H09	3.5	600	50	12V/24V	701*695*176	Tractor or Truck Cabin
GC-04	5H14	5.25	600	50	12V/24V	760*754*162	Ambulance, Van or Heavy-duty Truck Cabin
GC-10E	7H15 / TM21	10	1200	50	12V/24V	1020*980*174	5-6.5m Minibus or Van
GC-8C	TM21	12	2000	50	12V/24V	1660*1245*210	5.5-7m Minibus or Van

DC Battery Drive

DC Electric Series

Guchen is an independent manufacturer fully devoted to design, produce, install and service of complete air conditioning system and components for 24V/12V DC air conditioner at the top quality, bring to the market customized services & project planning for automotive manufacturers, truck manufacturers, and van manufacturers, ensuring our clients were treated with higher standards of honesty and professionalism.



Model	Voltage (v)	Cooling Capacity (KW)	Evaporator Air Flow (m³/h)	Max Ambient temperature (°C)	Dimension (mm)	Application
Airpro2000	12V/24V	2.0	500	50	C: 865*660*210 E: 425*325*155	All kinds of trucks, construction machines
Ecooler2600	12V/24V	2.6	650	50	C: 681*465*192 E: 540*362*185	
Ecooler2400	12V/24V	2.4	600	50	700*582*263	
Ecooler3200	24V	3.2	700	50	885*710*290	
Ecooler3800A	AC220V	4	600	50	788*632*256	RV or VAN
Airpro4000	24V	3.5	700	50	1050*800*225	



COOL



在**炎炎夏日**，给您不一样的**凉爽**感觉。

In the scorching summer, bring you special cool feeling.



岁月会见证	Time will witness
我们记录着的	What we recorded is the clang of footsteps about the advance of enterprise.
是一个企业铿锵前行的足音	What we portrayed is the beauty of pictures about the history of an enterprise
是一个企业走过的醇美画卷	On the journey, as time passing by.
时间承受霜降	We have endured baptism from rain, snow, wind and frost.
岁月晒上寒霜	In harvesting season,
在荣誉的丰硕之季取得骄人成绩	Honors and achievements are what we proudly possess.
更重要的是	The most important is:
我们历经坚忍卓绝的成长	We have gone through period for growth.
用坚实的足迹朝着梦想努力	We are striving to make our dream come true.
固臣将保持锐进之势	Guchen will keep its momentum of fast development,
开创更高、更远、更好的未来	and create a higher and better future.

